



C. G. JUNG SOCIETY • SEATTLE

"As far as we can discern, the sole purpose of human existence is to kindle a light in the darkness of mere being" -C. G. Jung

40th Anniversary • 1973-2013

| | |
|------------------|----------------------------|
| September 20, 21 | Thomas Kirsch, M.D. |
| October 18, 19 | James Hollis, Ph.D. |
| November 8, 9 | Terry Gibson, Ph.D. |
| December 13, 14 | Kathryn Madden, Ph.D. |
| January 10, 11 | Robert Bosnak, PsyA, JD |
| February 7, 8 | Leland Shields, M.S., M.A. |
| March 7, 8 | Ralph Metzner, Ph.D. |
| April 11, 12 | John Van Eenwyk, Ph.D. |
| May 9, 10 | Anthony Lawlor |



Project Mnemosyne

The Seattle Jung Society has one of the most unique libraries in America. In addition to our extensive library of books collected over 40 years, we house hundreds of audio and video tapes of lecturers and workshop presenters the Society has hosted over the decades.

In our collection of "memories" are lectures by the Society's speakers over the years, speakers such as Jean Shinoda Bolen, Lionel Corbett, Anne de Vore, Gilda Frantz, James Hollis, Janet Dallet, Linda Leonard, Terrill Gibson, Phil Cousineau, Sonu Shamdasani, John Radecki, Bette Joram, Allan Chinen, Louise Bode, Stanley Krippner, and many other Jungian scholars, some nationally known and many from the Pacific Northwest. The library's lending collection includes approximately 700 audio lectures and 90 videos. About two-thirds of these lectures were hosted by the Jung Society, Seattle.

Through Project Mnemosyne (pronounced ne-mos-i-ne), the Society is converting these memories from magnetic audiocassette and VHS tapes to digital media that can easily be shared

IN THIS ISSUE:



Thomas Kirsch, M.D.
The Kirsch-Jung Letters

Page 2



James Hollis, Ph.D.
Hauntings: Dispelling the Ghosts Who Run Our

Page 3



Terry Gibson, Ph.D.
The Anima Mundi and Repair of the World Tree

Page 4



Kathryn Madden, Ph.D.
From Chaos to Creative Ritual in Life Transitions

Page 5



Mnemosyne: Continued on page 8...

Thomas B. Kirsch, Ph.D.:

Friday, September 20th Lecture: *The Kirsch-Jung Letters*

James Kirsch, my father, was one of the first generation analysts who had his primary analysis with Jung. As a young man in his 20s he began a psychoanalysis, which did not satisfy him and so he entered a Jungian analysis in Berlin. In 1928 he wrote to Jung asking if he could begin analysis, and in 1929 James Kirsch spent two months in Zürich in analysis with both Jung and Toni Wolff. This began a multiple level relationship, which spanned four decades and great distances. There are approximately 150 letters in this correspondence with Jung writing approximately 10 more than my father.

The contents of the letters cover important subjects such as the relationship between Jews and Christians, Nazi-ism, anti-Semitism, clinical issues in psychotherapy, synchronicity, organizational issues in building up Jungian organizations, difficult personalities. My father was a founding member of the CG Jung Institute in Berlin, Tel Aviv, London, and Los Angeles. The collection also includes a few letters from Hilde Kirsch, my mother, and a wonderful short history of the International Association for Medical Psychotherapy.

James and Hilde Kirsch along with Max Zeller were the co-founders of the Analytical Psychology Club and the Jung Institute in Los Angeles. My parents arrived in Los Angeles in December 1940, and the Zellers arrived in 1941. Their views of Jung and analytical psychology dominated the scene in Southern California for three decades or more. This letters gives one a glimpse of the struggles that these early pioneers had to go through in establishing the Jungian community.

The correspondence was edited by Ann Lammers, who had previously edited the Victor White/Jung correspondence and who has a thorough knowledge of working with Jung archival material. Highlights from it will be read and discussed.

Saturday, September 21th Workshop: will be an in depth exploration of the Kirsch-Jung letters. **Continued...on page 10**



Good Shepherd Center

September 20th 7-9 pm

September 21st 10 am-4 pm

See page 11 for CEUs and

Pricing Information

Thomas B. Kirsch, M.D. is a Jungian analyst, the Past President of the Jung Institute of San Francisco and Past President of the International Association for Analytical Psychology. He has a B.A. from Reed College, his MD from Yale School of Medicine, and did his psychiatry residency at Stanford. He did his Jungian training in San Francisco and has been in private practice in Palo Alto since 1967.

He is the author of "The Jungians, A Social History of the Jungian Movement 2000"; he was Co-Editor Jungian Section of the "International Encyclopedia of Psychoanalysis, Psychiatry, Psychology, and Neurology 1977"; Co-Editor of "Initiation: The Reality of an Archetype" 2007; Consultant Editor to the book "CG Jung- James Kirsch Correspondence 2011"; and has written numerous papers on the history of depth psychology, the analytic relationship, and dreams. Presently working on a Memoir and co-editing with George Hogenson, "Papers from the Red Book."

James Hollis, Ph.D.:

Friday, October 18th Lecture: *Haunting: Dispelling the Ghosts Who Run Our Lives*

Our ancestors believed in ghosts, and perhaps they were not far off the mark as so much of daily life is driven by invisible psychic forces, archaic agendas, and imperious admonitions and prohibitions, all the more powerful because they operate unconsciously. What are the features of such “hauntings,” and how might we gain some further foothold on a more conscious conduct of life?



October 18th 7-9 pm at the
Good Shepherd Center
4th Floor Chapel

October 19th 10 am-2:30 pm at the
Good Shepherd Center

See page 11 for CEUs and Pricing
Information

Saturday, October 19th Workshop: *Hauntings*

Literary and case studies will illustrate the presence of “hauntings” in people’s lives. Please bring notepad and pen upon which to reflect on the invisible powers, which govern your daily life.



James Hollis’ new book will be available for purchase at both events.

Hauntings considers how we are all governed by the presence of invisible forms – spirits, ghosts, ancestral and parental influences, inner voices, dreams, impulses, untold stories, complexes, synchronicities, and mysteries – which move through us, and through history. *Hauntings* offers a way to understand them psychologically, examining the persistence of the past in influencing our present, conscious lives and noting that engagement with mystery is what life asks of each of us. From such engagements, a deeper, more thoughtful, more considered life may come.

Continued...on page 11

James Hollis, Ph.D., is a Zurich-trained Jungian analyst in private practice in Houston, Texas. Internationally acclaimed analyst and author, Dr. Hollis is former Executive Director of the Jung Educational Center of Houston and professor of Jungian Studies at Saybrook University, San Francisco, California. Additionally, he is retired Senior Training Analyst for the Inter-Regional Society of Jungian Analysts, first Director of the Philadelphia Jung Institute, and President Emeritus of the Philemon Foundation. Among his publications are numerous articles and fourteen books (some of which have been translated into sixteen languages), including *The Eden Project: In Search of the Magical Other*; *Finding Meaning in the Second Half of Life*; *What Matters Most: Living a More Considered Life The Middle Passage*; and most recently, *Hauntings: Dispelling the Ghosts Who Run Our Lives*.

Terry Gibson, Ph.D.:

Friday, November 8th Lecture: *The Anima Mundi and Repair of the World Tree*

In Carl Jung's famous commentary *The Philosophical Tree*, he reflected on a patient-generated series of tree drawings by persons in deep engagement with the depth psyche. Within that rich canon of therapeutically-generated images Jung found a whole healing cosmology, a cosmology that goes all the way back to Plato and through Plato to our shamanic cave origins. The tree is a living *imago* of Plato's ancient world soul. Jung explicitizes the connection of tree, symbol, and soul. The ancients called this *Uber-earth* spirit the Anima Mundi, the spirit of the world, one of the oldest consistent psycho-spiritual ideas in the west.

The earth is pure psycho-spiritual space. This notion about the primary vitalism that underlies all sentient experience on the planet probably is as old as the Paleolithic cave sanctuaries, but certainly as old as Plato. It is a notion that the planet is alive, that she is Mother, Breast, and Home to us all. The Tree stands as an essential demotic of Soul.

This seminar seeks to frame Jungian psychology as one of many synchronistically appearing recent disciplines that recalls this Anima Mundi and calls us to Her service. It asks what our chaotic, contemptuous politics would look like, what our ailing planet might heal, what our vacuous culture and collectively empty spiritualities might manifest in Her renewing, transformative embrace.

Saturday, November 9th Workshop:

Using clinical and cultural vignette, film illustration and personal reflection, this seminar hopes to revive an interest and awareness into the pervasive essence and transformative balm of the Anima Mundi matrix within which we abide and from which we have become so tragically dissociated as both individuals and as a species. To find our way back to Her Home may be the only way we survive as a species. The following questions will be explored in this presentation: 1) How does depth psychology connect and reconnect us with the Anima Mundi and her ancient shamanic, mystical, and contemplative methodologies of psycho-spiritual deepening and healing? 2) How does depth psychology create safe containers within which to locate and "voice" Anima Mundi? 3) How does depth therapy and the Anima Mundi open us up to our destinies – both personal and collective? How might a holistic reconnection with the Anima Mundi help heal our tattered planetary politics?

Terrill L. Gibson, Ph.D., is a Jungian Analyst, Diplomat in the American Assoc. of Pastoral Counselors, and an approved supervisor for the American Assoc. for Marriage & Family therapy. Dr. Gibson practices individual & family therapy with Pastoral Therapy in Tacoma, WA. He writes widely on the basic theme of the integration of psychotherapy and spirituality, corporations, and religious congregations.

[Continued... on page 11](#)



November 8th 7-9 pm

November 9th, 10 am-4 pm

Good Shepherd Center

Rm. 202

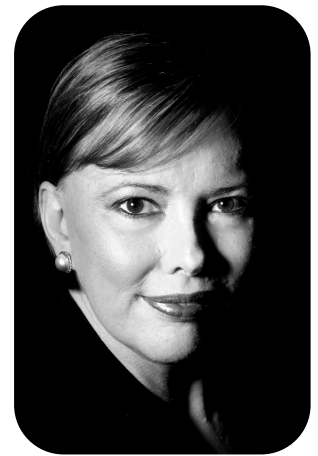
See page 11 for CEUs and Pricing Information

Kathryn Madden, Ph.D.:

Friday, December 13th Lecture: *From Chaos to Creative Ritual in Life Transitions*

Important to Jung was a life-long study of dreams, ceremonies, ritual, and religious practices. He believed that everyday reality could potentially be transformed into a symbolic experience if we open ourselves to the space of “liminality.” Liminality represents a state of transition between “stasis” and “growth” wherein one is no longer where one was, but is not yet where he or she is going. Liminality may involve long periods of isolation or feelings of chaos – as if we are suspended in a deathlike state--in which we are cut off from our normal contacts, supportive communities, and social lives. Primordial energies of deep, underlying myths are mobilized in moments of crisis and during transitional – or liminal – periods.

As we explore the emotional and experiential underpinnings of liminality through ritual, we can pass through the “betwixt or between,” chaos and confusion. Ritual contains and allows for feelings and instincts to be transformed into imagery. We can relate to the images that emerge until a symbol emerges. Attention to ritual can serve to alleviate personal or social turmoil and conflict.



Kathryn Madden, Ph.D.

Good Shepherd Center

Dec. 13th 7 pm to 9 pm

Dec. 14th 10 am to 4 pm

See page 11 for CEUs & Pricing

Saturday, December 14th Workshop: *Morning: Dream Circle*

The dream circle will elicit both night-dream and waking-dream images from the group with the purpose of attending to images or narratives of liminality. We will observe what notions of ritual actions emerge in relation to the groups' common themes and/or themes of opposition, noting that often the images that arise from liminality show a complexity of opposition and paradox. The group will be offered opportunity to express these opposites and their own experiences of liminality in various forms.

Afternoon: The Symbol:

We will continue to work reflectively through our images, to make the unknown known. What in our group container is emerging as a symbol from the group? Amplifying the symbol from an individual, group, social context, and cultural context, the symbol will reveal something that was previously invisible and carries the potential for renewal.

Kathryn Madden, Ph.D. is a psychoanalyst of Jungian orientation in private practice in New York City. She is author of *Dark Light of the Soul*, co-editor of the *Encyclopedia of Psychology & Religion*, senior editor of *Quadrant*, is on the Adjunct Faculty at the Pacifica Institute, and a Lecturer in Depth Psychology and Comparative Spirituality at Union Theological Seminary. Her forthcoming book is entitled *The Vanquishing Point*, and she continues to lecture internationally.

Continued...on page 11

[Order Dr. Madden's books through the C. G. Jung Society link to Amazon](#)

40th Anniversary Celebration • 1973-2013 *and Annual Board Meeting*



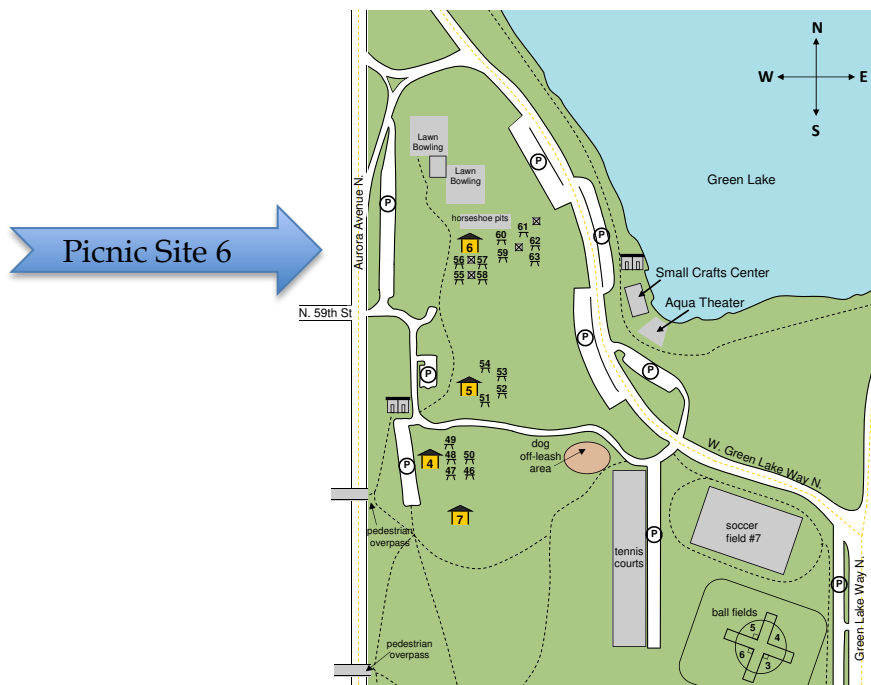
The **40th Anniversary Celebration** is scheduled for Sunday, September 15th at Woodland Park. Plan on an enjoyable time as we socialize and picnic in the park. Important board positions are open, and your support and vote is needed to keep the C. G. Jung Society, Seattle viable for years to come.

Where: Woodland Park, Picnic Site 6

When: September 15th from 4 p.m. to 8 p.m.

What to Bring: pot luck dishes to share (Jung Society will provides non-alcoholic beverages)

Why: Board election and annual meeting & Time to celebrate 40 years of C. G. Jung, Seattle



Please join us at Woodland Park, Sunday, September 15th

Celebrate and Vote!



**Announcing the Launch of the
David Blum Digital Collection and Commentary**

**ARAS Connections: Image and Archetype
Presents: *Pictures from the Unconscious***

Tom Singer, M.D., Co-Chair of ARAS Online for National ARAS, writes that ARAS Online is deeply honored to have been selected as the recipient of the **David Blum Digital Collection** and its accompanying text, which was unveiled in the June 2013, edition of ARAS Connections.

David Blum was a distinguished **musician and writer**, who documented his singular, inner journey in dream images, text, and music, over a thirty-five year period. The forty-four exquisite digital reproductions of the original oil pastel paintings, are each accompanied by a rich and penetrating commentary, derived from the following primary sources: David Blum's unpublished manuscript, "Pictures from the Unconscious," personal

diaries, dream journals, and the DVD documentary, entitled "**Appointment with The Wise Old Dog**," produced in 1998, when David Blum was dying from cancer. Image and text reveal an unfolding story of a man's path towards wholeness, in which he faces death, yet experiences a healing transformation. David Blum's "Pictures from the Unconscious" should serve as a deep well for all of us.



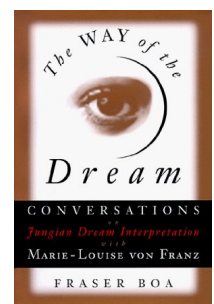
<http://aras.org/notices/newsletter13-02.html>

*Thank you Sarah Blum, C. G. Jung Society member, for submitting
this announcement*

David Blum, *The Dachshund Quartet*, 1995

Attention: Our library copy of *The Way of the Dream* is missing. If you borrowed it, please return it so that others may enjoy this excellent work. Please check your bookshelves for this and other materials.

If someone has an extra copy of *The Way of the Dream* that they would like to donate, please let us know. The C. G. Jung Society, Seattle appreciates all of your donations.



Project Mnemosyne . . .continued from page 1

electronically. Project Mnemosyne will conserve the repository of knowledge in the Jung Society's library, which in its current form is in danger of degrading beyond use.

Now, with up-to-date technologies, we can make these substantive lectures available to a world that is hungry for the wisdom of depth psychology.

Charles Morrison, a Society member who volunteers on first Saturdays in our library, called the Society's audio-video library an Explorer's Club for the Psyche. The Explorer's Club concept was inspired by the Society's recording of Claire Douglas' 2001 **Visions Seminar**. In the lecture, Douglas tells the story of how one of Jung's analysands, Christina Morgan, catalyzed the development of Jung's concept of Active Imagination.

Jung could be viewed as having returned from having mapped an unknown continent where Morgan and he had traveled together and he was sitting in some **explorer's club of the psyche**, regaling fellow enthusiasts with stories of the incredible sights he'd seen, riches he'd found and amazing similarities he discovered across time space and culture.

In a paper titled "Incline Your Ear," published in 2009, Morrison wrote:

The efforts of our volunteer library staff have created Seattle's own "Explorer's Club" In our collection, we hear the experience of people who have been inspired by, wrestled with, and massaged Jungian thought deeply into their own lives. We have lecture material which has yet to make it into book form (Murray Stein's and Robert Moore's lectures are examples), and are a fertile ground where we can observe creative ideas in the process of growth.

Morrison described the influence of these lectures on him as taking him from Crazy to Calm in 60 Seconds:

I have discovered that listening to these lectures has a deeply meditative effect. When I first moved to Seattle from rural Hawaii, the traffic drove me nearly insane. Every morning and evening in an hour long stop-and-go traffic jam? You've got to be kidding! Where was the morning meditation? Where was chat with a friend over a cup of herbal tea? In the first weeks of commuting I preserved my sanity only by becoming a witness to the rapidity with which I lost whatever pretense to spiritual enlightenment I imagined I possessed.

For the mere price of a used cassette player and rechargeable batteries plugged into the CD outlet on my car radio, my battle with "those 'other people' incapable of even driving their car across the bridge" transformed into an exploration of the depths of the psyche with new mentors as my guides. And again on the evening return trip, I actually found myself feeling "Ah! A traffic jam! Wonderful! I can finish this morning's lecture!"

Morrison noted, "Perhaps the only obstacle preventing people from diving into our collection of audio gems are the sheer number of cassettes and the inability to browse a cassette tape the way you can leaf through the pages of a book."

Copies of Morrison's paper include a short inventory of our audio collection. Contact the office for an electronic copy.

. . . continued on page 9



A huge thank you goes to founding member and long-time patron, Nancy Alvord, for launching Project Mnemosyne with a gift of \$5,000

Project Mnemosyne . . . continued from page 8

Visualize all the resources sitting on the shelves of the Jung Society of Seattle's unique library. Contemplate all the energy the speakers put into developing the lecture or workshop, and the time it took to get the speakers to the Society's stage. Think of the powerful ideas presented in those lectures, and you can see how Project Mnemosyne will release a bounty of precious knowledge to the wider community through online digital technologies.

Project Mnemosyne is being coordinated by volunteers, but the digitization work will be done professionally. We are now testing vendors to identify who can produce the best quality product - a clear recording for the listener's best experience.

Project Mnemosyne is an avenue for Society members and community members to help bring Jung's light into 'the darkness of mere being' for the benefit of so many who have not had the opportunity to benefit from his ideas.

You can support Project Mnemosyne by mailing a check to the office, or through our website at

www.jungseattle.org/donations

You can also send your support by mailing a check to the office, of course. Donations for Project Mnemosyne are tax deductible, as are all donations to the C.G. Jung Society, Seattle, a 501(c)(3) charitable organization.

Thank you so much for your participation!

Contact the Jung Society office, or email Kelly at office@jungseattle.org for more information.



If you are viewing this newsletter online, please click on image and "Like us"



Salon in the Library: Ismana Carney, Ph.D.

C. G. Jung Society of Seattle members have the opportunity to present their ideas for things like articles, educational courses and seminars to other members for review, discussion and feedback in a relaxed collegial conversational setting surrounded by our extensive library. In July's *Salon in the Library*, **Ismana Carney, Ph.D.** presented "Unearthing the Shamanic Self: The Soul at Work" on July 15th. Dr. Carney shared her work on shamanism, which is grounded in Jungian scholarship. Her work involves experiential meditation, mantras, the creative imagination, and shamanic work to enter into visioning states, where encounters with psychodynamic images, archetypal or spirit beings, and or one's complexes may occur. Contact her at pendragon2@earthlink.net for further information.

Submit requests to present your ideas to:
office@jungseattle.org

The Nancy Alvord Library: A Great Member Benefit

If you use Amazon to place orders (books, lawn mowers, or whatever), please use the Jung Society's [web page conduit](#), every nickel counts!



Thanks to Linda Scheafer, of Lummi Island, and all our library volunteers.



Librarian, Bunny Brown, lovingly gives her time and wisdom to keep the library a vital member resource.



Read up on Jung...
Book Sale in the Library

Library News:

If you have been in the library recently you may have noticed the tables are full of books for sale, many of which have recently been donated by David Spangler. They deal with the Millennium, ecology, ageing, war, the future and other fascinating topics. We thank him for his most generous donation and thanks to Debra Thompson Harvey for delivering them.

New additions include:

- Water of Life* (new edition) by David Hart
- Psychology of Abortion* by Ginette Paris
- Incredible Fascination of Violence* by Allan Guggenbuhl
- Wild Mind, A Field Guide to the Human Psyche* by Bill Plotkin

We have all the current issues of *Parabola*, *Psychological Perspectives* and the *Journal of Analytical Psychology* for borrowing.

Bunny

Thomas Kirsch, M.D. Learning Objectives:

1. Explore the relationship between Jews and Christians, Nazi-ism, anti-Semitism through the Kirsch-Jung letters.
2. Investigate the relationship between C. G. Jung and James Kirsch.
3. Deep exploration of the Kirsch-Jung letters collection along with letters from Hilde Kirsch (wife and mother).

James Hollis, Ph.D. Learning Objectives:

1. Understand the replicative nature of “complexes,” and their implications for therapy.
2. Track from behavioral patterns, the narrative threads that run through a person’s history.
3. Discern ways to identify manifestations of the unconscious in the midst of biographical detail.
4. Gain a greater appreciation for the role of affect-laden ideas to generate patterns.
5. Identify the place of “secrets,” and stories untold in the shame-based sources of patient behavior.

Terry Gibson, Ph.D. Learning Objectives:

1. How does depth psychology reconnect us with the Anima Mundi and her ancient shamanic, mystical, and contemplative methodologies of psycho-spiritual deepening and healing?
2. How does depth psychology create safe containers within which to locate and “voice” the Anima Mundi?
3. How does depth therapy and the Anima Mundi open us up to our destinies – both personal and collective?
4. How might a holistic reconnection with the Anima Mundi help heal our tattered planetary politics?

Katherine Madden, Ph.D. Learning Objectives:

1. Gain knowledge about rites of passage in ritual that give insight into clinical diagnoses.
2. Exploration of the concept of liminality will offer deepened understanding of the inevitable lacunae in the individual or collective psyche.
3. Participants will learn that experiencing a symbol should be a separate endeavor from analyzing and interpreting it empirically.
4. Learn to distinguish “dominant symbols,” which are connected to the values and meaning that undergird a ritual event, from lesser symbols.

**C. G. JUNG SOCIETY,
SEATTLE
STATEMENT OF
PURPOSE**

The C.G. Jung Society, a nonprofit education corporation established in 1973, publishes this newsletter three times a year. The purpose of the Society is to promote public interest in, and understanding of, analytical psychology and the current use of Jungian concepts by contemporary thinkers. The Society sponsors lectures, workshops, seminars and study groups and maintains a library of Jungian materials. Programs are, for the most part, intended for the general public.

Continuing Education

Programs presented by the C. G. Jung Society, Seattle (unless otherwise noted) have approved CEUs by the Washington Chapter National Association of Social Workers (NASW) for Licensed Social Workers, Licensed Marriage & Family Therapists and Licensed Mental Health Counselors. Provider number is #1975-157.

SAVE THE DATE: Sunday June 8, 2014, 2:00 p.m. to 5:15 p.m.

A Presentation by Sonu Shamdasani on Jung's *Red Book*

co-sponsored by Sandplay Therapists of America & C.G. Jung Society, Seattle

Sonu Shamdasani, editor of Jung's *Red Book*, has been invited to Seattle as a keynote speaker by Sandplay Therapists of America for their National Conference June 5 – 8 at the Red Lion Hotel on Fifth Avenue in Seattle. Following the conference, there will be a post-conference on Sunday afternoon, co-sponsored by STA and the Seattle C.G. Jung Society in which Sonu Shamdasani will present material more specific to the *Red Book*.

Sonu Shamdasani is Philemon Professor of Jung History at University College London. He is the author of numerous publications including his work over many years as editor of the previously unpublished *Red Book* by C.G. Jung. He is currently editing Jung's *Black Books* for publication. His most recent works are *C.G. Jung: A Biography in Books* (2012) and, with James Hillman, *The Lament of the Dead, Psychology After Jung's Red Book*, available in August, 2013. Previous publications, among others, include *Cult Fictions: C.G. Jung and the Founding of Analytical Psychology* (1998); *Jung, the Making of Modern Psychology: The Dream of a Science* (2003); and *Jung Stripped Bare by His Biographers* (2004).



The STA National Conference is open to all who are interested in Sandplay Therapy. Sandplay was founded by Dora Kalff in Switzerland. She knew Jung and was encouraged by him to study with British pediatrician Margaret Lowenfeld, the creator of the use of a sandtray as a non-verbal technique in therapeutic work. Although focused for clinicians and applicable to psychotherapy with children and/or adults, the conference is open to non-clinicians.

The theme is "The Spirit of Story in Sandplay," calling upon the importance of myth and story, and story poles, in the traditions of the Pacific Northwest. Invited keynote speakers are Sonu Shamdasani and Maggie Baron, a member of the International Society for Sandplay Therapy in London. For the conference, Professor Shamdasani has been asked to speak about understanding Jung. In addition, there will be over 35 workshops and other presentations, some of which will offer Association for Play Therapy credits. Over the

course of the conference, there will be 18 hours of Continuing Education available. Those who pre-register for the conference, will receive a discount when also registering for the post-conference event.

All are welcome to attend the post-conference with **Professor Shamdasani** and may wish to register only for this separate event. It is open to anyone interested in a more in depth look at Jung's *Red Book*. There will be three hours of Continuing Education available for clinicians. Online registration will be handled by STA. A link for this will be sent to Jung Society members by email after the first of the year. A discount for pre-registration will apply for Jung Society members.

Janet Tatum, on behalf of Sandplay Therapists of America, and the Jung Society board members, have collaborated on this project in order for our two groups to bring this exciting event to Seattle. If there are questions, please contact Jung Society.

President's Message:

Welcome to a new season of speakers: Thomas Kirsch on history of Jung and James Kirsch, James Hollis on Hauntings, Terry Gibson on The Anima Mundi and Kathryn Madden on Life Transitions. Mark your calendars now.

The Mnemosyne Project is moving forward thanks to the efforts of K. Kelly, Melissa Mace, Charles Morrison and others. We have received a very generous donation to get it started and we are looking forward to being able to access some our digitized tapes on line. We will be asking all of you for support soon and thanks to all of you who have contributed so far.

Another major project in progress is our web re-design. Thanks to Sea Gabriel, K. Kelly, Charles M. and David Steinmetz we will have a more dynamic presence in the Seattle Jungian community, and we will have access to a service that will allow all of us to renew your membership on line and to sign up for coming events, access our library catalogue, etc.

Plans for the 40th anniversary celebration are almost complete. It will take place on September 15th at Woodland Park. You will receive more details soon. The election for new and continuing Board members will take place at this time. Please mark your calendars now. We need your vote! I invite you to email the office with your suggestions at office@jungseattle.org.

The Red Book Summer series was filled to capacity. If you would like to see this class scheduled for another time please let us know.

--Bunny

| | |
|--|------|
| <u>Member Admission Schedule</u> | |
| Lectures | \$15 |
| Workshops | \$50 |
| <u>Nonmember Admission Schedule</u> | |
| Lectures | \$25 |
| Workshops | \$70 |
| <u>CEU Certificates</u> | |
| Lecture only | \$10 |
| Workshop only | \$10 |
| Lecture & Workshop | \$15 |
| Dr. Hollis' Lecture is \$20 for Members and \$30 for Non-members. The workshop will be \$60/\$70 (Member/Non-Member) | |

Board of Directors

President/Librarian:

Bunny Brown

Vice-President:

Vacant

Treasurer:

Todd Boyle

Recording Secretary:

Barbara Heather, Ph.D.

Office Manager & Cashier:

Diane Bogue

Program Planning Chair:

Tom Wilkenson, Ed.D.

Development:

K. Kelly, Ph.D.

Newsletter Editor:

Anne Taylor, Ph.D.

Social Media:

Vacant

.....
Program Planning Committee

Tom Wilkenson, Ed.D., Shirley McNeil, Ph.D., Anne Taylor, Ph.D.

Webmaster

David Steinmetz

Event Volunteers

Stephanie Gierman, Charles Morrison, Daisy Lu

Information Technology Support

Charles Morrison

A/V Volunteer

Bryan Edmark

NONPROFIT ORG.
U.S. POSTAGE
PAID
SEATTLE, WA
PERMIT NO. 1820

C. G. Jung Society, Seattle

4649 Sunnyside Avenue North, Room 222
Seattle, WA 98103

<http://jungseattle.org> phone: 206-547-3956 fax: 206-547-5959 email: office@jungseattle.org

Use Preregistration Form or Order at <http://brownpapertickets.com>
Tickets also available at the door

C. G. Jung Society, Seattle



Payment must accompany your preregistration. No refunds. Please check each event for specific fee, times, locations. Mail this form and payment to C. G. Jung Society, 4649 Sunnyside Ave. N, Room 222, Seattle, WA 98103

I enclose \$_____ for preregistration of:_____

I'd like to support **Project Mnemosyne** in the amount of: _____

Charge my (circle one Visa MC)

Number_____Exp_____

Name_____Phone_____

Address_____

City_____State_____Zip_____

Signature (CC only)_____