



C.G. Jung Society, Seattle

"Before the human mind had ever set itself to the labour of thought, the myth already flowed like a natural fountain out of the unconscious... Like a fish to its native stream, the moral of a people also abides in their relation to their myth: when this is destroyed by intellectual sophistication or by other causes, the virtue of a people departs." —H. G. Baynes, Mythology of the Soul

Co-President's Messages:

Bette Joram Ph.D.

Season's greetings to you.

As we celebrate the holidays and look forward to the coming year, I wish to acknowledge the contributions of the Board of Directors, Office Manager, and Volunteers, who keep the Jung Society running. Thank you, Randy, for your leadership as Co-President, your vision, program planning, and teaching. Thank you, Larry, for being secretary to the board, Zoom host, and library volunteer. Thank you Sam, our treasurer, Akesha for the Jung Cafe', Cece, and Jacob for membership and program work, and for bringing your wisdom and energy to us. Thank you Hali, for the innumerable things you do as Office Manager, coordinating our events and communications, and putting the newsletter together.

Thank you, Laura, for tracking our financial records and other important renewal dates and deadlines. Thank you, Tamara for all you are doing for the library—organizing, updating, and working with all of our library volunteers. Thank you Linda, Mike, Charles, Larry, and Quinn for keeping our library open.

I am grateful every day for the love, thoughtfulness, and energy all of you bring to keep the Jung Society on its feet and moving into the future.

Warmest wishes to all of you,
Bette Joram, Co-President

Randy Morris, Ph.D.

Dear Jungian Community –

Welcome to another edition of the Newsletter of the C. G. Jung Society, Seattle! We hope you are exploring our new website (www.jungseattle.org), enjoying our Fall Series on "Imagining a Jungian Wisdom School for the 21st Century" and anticipating a stellar lineup of speakers, workshops and classes in 2023. We have opened each session of our Wisdom School of the Heart with the lighting of a candle

Winter 2023 Event Calendar

Lecture Series

January—Carolyn Baker, Ph.D.—**Humanity's Rite of Passage in Perilous Times**

February—Geneen Marie Haugen, Ph.D.—**Awakening Planetary Imagination**

March—Dylan Hoffman Ph.D.—**An Indigenous Depth Psychology: Individuation as Inhabitation**

April—Paul Levy—**Jung's Profound Ideas on Evil**

May—Kesstan Blandin, Ph.D.—**The Business of Jung in the 21st Century**

Wisdom School

February—**Alchemy: The Art of Transformation** with Bette Joram, Ph.D.

March—**Gnosticism for Jungians** with Rev. Sam Osborne

April—**The Liminal and the Luminescent** with Terrill Gibson, Ph.D.

Saturdays
9:00am - 10:30am PST

Fairy Tale Fridays

Dec 2, Jan 6, Feb 3, Mar 3
Ongoing Discussion Group
6:30pm-8:30pm PST
Online

Jung Cafe

Saturday mornings at the library. In-person.
11:00am-12:30pm

**4649 Sunnyside Ave N.
Room 222
Seattle, Washington 98103**

to acknowledge the Wisdom in each of us and the extraordinary Wisdom that constellates when we gather together as a learning community. Each time I am in the presence of this Community Candle, I am reminded of Jung's prophetic dream cited in Memories, Dreams, Reflections. It goes like this: *"It was night in some unknown place, and I was making slow and painful headway against a mighty wind. Dense fog was flying along everywhere. I had my hands cupped around a tiny light which threatened to go out at any moment. Everything depended on my keeping this little light alive. Suddenly I had the feeling that something was coming up behind me. I looked back, and saw a gigantic black figure following me. But at the same moment I was conscious, in spite of my terror, that I must keep my little light going through night and wind, regardless of all dangers. When I awoke I realized at once that the figure was a 'specter of the Brocken,' my own shadow on the swirling mists, brought into being by the little light I was carrying. I knew, too, that this little light was my consciousness, the only light I have. My own understanding is the sole treasure I possess, and the greatest. Though infinitely small and fragile in comparison with the powers of darkness, it is still a light, my only light. This dream was a great illumination for me."* (MDR, p. 88)

As the powers of darkness swirl about us in the midst of this Dark Night of the Species Soul, keeping this little light going through the night and wind, regardless of all dangers, is more important than ever. One of our goals as a Jungian learning community is to provide support for the light that burns in your cupped hands, offering the solace of companionship and safe harbor through the storm. Our fall series provided an opportunity to give imaginal substance to an interior 'Wisdom School of the Heart', with its own faculty, curriculum and learning modalities tailored to the unique contours of your own individuation process. In our Winter/Spring lecture series, we offer more opportunities to learn from Wisdom-Keepers who have been influenced by C.G. Jung and who used his ideas to forge their own light and who are now willing to share that light with us. Consider them all as faculty of the Wisdom School of the Heart.

To further strengthen the imagination of your own Wisdom School, we will follow each lecture series with an online 'Wisdom School Homeroom' where community members can gather and discuss the ideas that have been inspired by the speakers. We also offer ongoing classes in Fairytales, Alchemy, Gnosticism and Liminality, not to mention our weekly Jung Cafe discussions. These offerings provide a rich curriculum for your own Wisdom School and we hope they will give you the strength and courage to maintain and grow the precious light of your own interior imagination.

Randy Morris, Ph.D.

Co-President, C.G. Jung Society of Seattle

THE JUNG CAFÉ

"A complex is a strong feeling, and a defense against that feeling. That's what splits it off from the regular ego." –Donald Kalsched, This Jungian Life podcast, August 24, 2022

What really is a complex? What is an archetype? How does an archetype differ from a symbol? Bring your questions to our in-person discussion group that continues to meet weekly on Saturday mornings, 11:00am to 12:30pm in the Nancy Alvord Library, room 202 of the Good Shepherd Center. Participants suggest and discuss a variety of Jungian and depth psychological topics, articles and chapters and benefit from community connection.

Please join us!! Before attending for the first time, please email akesha.baron@gmail.com or laura.rivendell@yahoo.com. To be added to the email list, please email laura.rivendell@yahoo.com. We look forward to seeing you!

For questions email: Akesha.Baron@gmail.com.



FAIRY TALE FRIDAYS

A discussion of fairy tales facilitated by Stephanie Gierman, Jungian Analyst, and Bette R. Joram, Ph.D.

December 2, 2022. January 6, February 3, March 3, 2023
Sessions held on Friday evenings, 6:30 pm PST – 8:30 pm PT

Purchase a member or non-member ticket to join the discussion.

CEU ticket sold separately.

<https://www.jungseattle.org>

Suggested reading:

The Interpretation of Fairy Tales, by Marie Louise von Franz.

"Marie Louise von Franz quoted Jung as saying that to be in a situation where there is no way out or to be in a conflict where there is no solution is the classical beginning of the process of individuation. Fairy tales begin this way as well. Once upon a time, a queen is dead, or children are abandoned in the woods, or a miller cannot feed his family, or the village is plagued by a giant, or a treasure is lost in a deep pool.

Once a month, Society members and other lovers of the power of story and the Jungian approach to understanding and developing ourselves, meet for Fairy Tale Fridays. In each story we find shadow, complexes, anima, animus, soul, ego, alchemy, and the numinous, all guiding us on a journey toward selfhood. Intuition tells us that these international stories of struggle and magic, so saturated with collective unconscious symbology, are much older than the written record. Recent research has all but confirmed that these enduring fables have been told around campfires and hearths since the Bronze Age—something Jungians have suspected all along."

Written by Reid Stell. For full article: tinyurl.com/VeryOldTales

Learning objectives:

1. Learn to identify the structure of the fairy tale. Begin with the exposition (time and place) and then the dramatis personae, the people involved. Next, name the problem, followed by the peripeteia or the ups and downs of the story. Identify the climax and notice that it is followed by a lysis or sometimes a catastrophe. At the end of the fairy tale something happens to switch us out of the fairy tale world.
2. Begin to amplify the motifs in the fairy tale by looking at comparative material. How can we construct a context? Ex: See how the mouse in this fairy tale behaves differently from other mice. What does this mean?
3. Understand how to begin to interpret the fairy tale, the task of translating the fairy tale into psychological language.

Inquiries: officemanager.jungseattle@gmail.com



Carolyn Baker, Ph.D.

Humanity's Rite of Passage in Perilous Times (Friday Lecture)

Carl Jung asserted that initiation or the rite of passage is an archetype inherent in the human psyche. That is to say that something in us wants and expects engagement in the initiatory process, not only at the age of puberty, but throughout our human experience. Jung believed, that even if we do not participate in a formal rite of passage ceremony as we transition from youth to adulthood, our human journey will provide us with initiatory events for the purpose of deepening our humanity and our connection with the cosmos and something greater than the human ego. It is likely that severity of the collapse of civilization and our ecosystems will be tempered by our perception and response to them as an initiatory process. Jung believed that even though Westerners almost never experience formal rites of passage, all humans experience them symbolically. This lecture will focus on our planetary predicament as a rite of passage that we are being asked to willingly enter and be transformed by.

Online Lecture:
1/20/2023,
7pm-9pm
Humanity's Rite of
Passage in
Perilous Times

Online
Workshop:
1/21/2023,
1pm-4pm
Recovering from
Addiction to Hope



Recovering From Our Addiction to Hope (Saturday Workshop)

Jung said that "As far as we can discern, the sole purpose of human existence is to kindle a light in the darkness of mere being." But we live in a world where we are expected to be hopeful, and we are told that we must be always hopeful. Often, we choose to be hopeful instead of making meaning of situations that feel hopeless. Thus, hope can become a burden instead of inspiring us. Is it possible to move beyond hope and the fear of feeling hopeless? The Buddhist scholar and author, Margaret Wheatley says that "A willingness to feel insecure...is the first step on the journey beyond hope and fear." What if outcomes are less important than the relationships, we form in our longing to create a better world and make meaning? How can surrendering to uncertainty make a difference in our efforts to make a difference?

Carolyn Baker, Ph.D., was a psychotherapist in private practice for 17 years and a professor of psychology and history for 10. She is the author of 15 books including Undaunted: Living Fiercely into Climate Meltdown In An Authoritarian World; Dark Gold: The Human Shadow And The Global Crisis; Navigating The Coming Chaos: A Handbook For Inner Transition (2011) and Sacred Demise: Walking The Spiritual Path of Industrial Civilization's Collapse (2009.) She manages her website at www.carolynbaker.net and publishes a subscription-based Daily News Digest which is a collection of news stories and inspiration focusing on the global crisis and options for navigating disruptive times. Carolyn lives and writes in Boulder, Colorado where she offers life coaching and spiritual counseling locally and worldwide for people who want support for dealing with the unprecedented challenges of our time.

Geneen Marie Haugen, Ph.D.

Awakening Planetary Imagination (Friday Lecture)

Amidst a tempest of climate disruption, social disarray, creature extinctions, ecosystem collapse and other mayhem, too few leaders have perceptual skills, sufficient imagination, or a strong enough compass to navigate the riptides of enormous change. Perhaps we need help from intelligence that is older and far more than human. What if the membrane between the planetary psyche and human imagination is permeable, allowing for Earth to press its own longings into our human awareness – both as individual persons, and as a species? On Friday evening – through poetry, thought experiments, and other fascinations – we'll explore foundational ideas that suggest the possibility of a planetary psyche that might be participatory with the individual (and collective) human psyche.

Imagination and the Reanimation of the World (Saturday Workshop)

On Saturday, in the experiential workshop, "Imagination and the Reanimation of the World," we'll consider the possibility that all beings and presences are alive, intelligent, and saturated in subjectivity. We'll explore how we might make ourselves more permeable to their dreams, as well as to what Thomas Berry called "the Dream of the Earth." We'll engage practices that can help erode our customary psychic habits enough to allow greater receptivity to the voices, images, and wisdom of our fellow inhabitants and of the planetary organism. We'll consider – as poet A.R. Ammons writes – how to become more "available / to any shape that may be / summoning itself / through me / from the self not mine but ours." Wild revelations that seem to emerge from something that is not quite – or not only – human may help us find our way through a necessary sea change in our relationship with Earth.

Geneen Marie Haugen, PhD, grew up a little wild, with a run-amok imagination. Her matrilineal ancestors are the indigenous Sami of the European Arctic. She is a content creator and guide to the mysteries of nature and psyche with the Animas Valley Institute (www.animas.org), and has been on the faculty of Esalen Institute and Schumacher College. Her writing has appeared in Spiritual Ecology: The Cry of the Earth; Thomas Berry: Dreamer of the Earth; Parabola; Kosmos Journal; Ecopsychology, and many others.

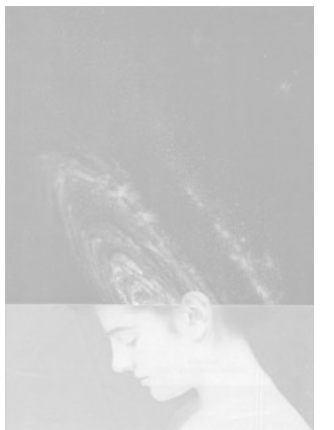


Online Lecture:
02/17/2023.
7pm-9pm:

Awakening
Planetary
Imagination

Online
Workshop:
02/18/2023.
1pm-4pm:

Imagination
and the
Reanimation of
the World
Awakening
Planetary
Imagination





Dylan Hoffman Ph.D.

An Indigenous Depth Psychology: Individuation as Inhabitation (Friday Lecture)

The lecture will analyze the place and significance of the so-called 'primitive' within the work of C. G. Jung as a whole—and how his colonialist assumptions both limit and prejudice his understanding of the perspectives and practices of indigenous peoples. Jung's reliance on the anthropological perspective of Lucien Lévy-Bruhl—specifically his notion of participation mystique—and the evolutionary recapitulation theory articulated by Ernst Haeckel (phylogeny recapitulates ontogeny) will be given particular attention, and critiqued as the underlying basis of Jung's misunderstanding of and patronizing stance toward the worldview of indigenous peoples. The purpose of this review and critique is to reveal the intimate rapport, and commonalities, between depth psychology and indigenous traditions, when depth psychology relinquishes discredited and racist assumptions that privilege Western individualism and rationalism over indigenous ways of knowing and being. Moreover, when Western superiority is challenged and the consequences of its views in racial and gender inequality, the marginalization of non-normative identities, and ecological destruction are faced, the importance of extending and tracing the roots of depth psychology beyond the West becomes imperative.

Online Lecture:
03/17/2023. 7pm-9pm
An Indigenous Depth Psychology: Individuation as Inhabitation

Online Workshop:
03/18/2023. 1pm-4pm
Practicing Indigeneity: Body, Ancestry, and Place

Practicing Indigeneity: Body, Ancestry, and Place (Saturday Workshop)

This imperative transforms depth psychology's stance toward non-western, indigenous traditions from one of colonialist condescension and appropriation, to one of humility and teachability. Jung's later work on synchronicity and the psychoid connection between psyche and matter, return depth psychology to the kind of primordial, holistic, and enchanted worldview taught and lived by indigenous peoples the world over. Such a worldview is the soil that depth psychology must more fully grow into and grow from in order to address the soul-loss of the modern world and redress the wounds caused to those marginalized by its colonialist assumptions. As an effort to embrace this task, this workshop will outline the nature and dynamics of a depth psychology that is rooted in indigeneity.

Dylan Hoffman, Ph.D. is a core professor in the Jungian and Archetypal Studies specialization of the Depth Psychology M.A./Ph.D. program at Pacifica Graduate Institute. Dylan teaches on the intersection between archetypes and individuation in the work of C. G. Jung and indigenous traditions as expressions of a primordial, holistic, and enchanted worldview within which to understand the archetypal psyche, to embody its wholeness, and to interrelate with its diverse manifestations in culture, ecology, and cosmos.

Paul Levy

Jung's Profound Ideas on Evil (Friday Lecture)

The great doctor of the soul C. G. Jung had profoundly important insights about the nature of evil that are particularly relevant for the darkness that is playing out in our modern world. Not speaking as a theologian or a metaphysician, Jung was pointing at the reality of psychological evil. He felt that evil had become a major factor in our world today—both on the individual and collective levels—that we needed to come to terms with or suffer the consequences. Jung felt that our species has become unconsciously "possessed" by something that was compelling us to act out our own destruction, which made him feel that humanity was in desperate need of nothing less than an exorcism. He was of the opinion that if we don't develop what he calls "an imagination for evil," we not only would have no way of dealing with the evil in our world, but that our lack of imagination dooms us to become an unwitting agent of evil. He strongly felt that the way of individuation didn't involve, like some spiritually oriented people feel, solely focusing on the light, but involved shedding light on the darkness, i.e., making the darkness, and our complicity with it, conscious. Jung felt that hidden within evil was a revelation that could help us understand the profound role that the human psyche played in creating world events.



Online Lecture:
04/21/2023. 7pm-9pm: Jung's Profound View on Evil

Online Workshop:
04/22/2023. 1pm-4pm: Unlocking the Light Hidden in the Darkness

Unlocking the Light Hidden in the Darkness (Saturday Workshop)

Jung's ideas on evil weren't abstract or philosophical theories, but had profound relevance for our day-to-day lives. The evil that Jung was pointing at was holographically enfolded throughout the nonlocal field, which is to say it is informing and giving shape to both the darkness in the world as well as within our own psyches. In this workshop we will explore the different ways that evil hides itself through our own unconscious blind-spots and reactions. We will shed light on the subtle—and not so subtle—ways that we are unwittingly feeding the very evil that is seemingly oppressing us. We will deepen our understanding of how connecting with our creative spirit can alchemically transmute what seems to be evil into something that serves our individuation.

An artist and wounded healer, **Paul Levy** is a pioneer in the field of spiritual emergence who is in private practice, assisting others who are also awakening to the dreamlike nature of reality. Among his books are the soon to be released Undreaming Wetiko: Breaking the Spell of the Nightmare Mind-virus (Inner Traditions, May 2023), the recently released Wetiko: Healing the Mind-Virus that Plagues Our World (Inner Traditions, Dec. 2021), The Quantum Revelation: A Radical Synthesis of Science and Spirituality (SelectBooks, 2018) and Dispelling Wetiko: Breaking the Curse of Evil (North Atlantic Books, 2013). He is the founder of the "Awaken in the Dream Community" in Portland, Oregon. Deeply steeped in the work of C. G. Jung, in the late 1980's he was the bookstore manager for the Jung Foundation Bookstore of New York, as well as being the advertising manager for the Jungian journal Quadrant. He has been a Tibetan Buddhist practitioner for almost 40 years. He is a faculty member of The Shift Network. Please visit Paul's website www.awakeninthedream.com. His email is paul@awakeninthedream.com



Kesstan Blandin, Ph.D.

The Business of Jung in the 21st Century (Friday Lecture)

Jung's work emerged on the cusp of the 20th century, in a very different time and context. Clearly, it remains meaningful to many, yet the Jungian field is also witnessing academic marginalization and dilution of Jung's theories in popular culture. To remain relevant, we must actively evolve Jung's ideas with the spirit of the times yet keep an eye on boundaries that cannot be crossed without compromising the essence of Jung's work. What aspects of Jungian psychology are timeless, which aspects need to evolve with knowledge in other fields? How do we further the work to a new generation without compromising its soul? Friday evening Dr. Blandin will discuss the challenges and insights that have come from working with Jungian theories and assessments with a non-Jungian audience today. Who is this "new generation" and how do we talk to them?

Online Lecture:
05/19/2023. 7pm-9pm: The Business of Jung in the 21st Century

Online Workshop:
05/20/2023 1pm-4pm: Archetype & Type: Jungian Assessments for Self-Growth



Archetype & Type: Jungian Assessments for Self-Growth (Saturday Workshop)

Dr. Blandin will present current programs and products the Foundation is putting out on Jung's work through the MBTI and the PMAI assessments and theories. We will discuss Carol Pearson's work on the 12 heroic Jungian archetypes of the PMAI system, Hugh Marr's work with archetypal stories and the PMAI archetypes in his new book *Finding Your Story: Using Archetypes to Guide Your Personal Journey*, and new work bringing together archetype and type for self-growth. In this latter area, Dr. Blandin and Dr. Yvonne Nelson-Reid bring the PMAI archetypes and MBTI types together in research and workshops to understand the meeting of dynamic shaping influences (archetypes) with the fixed, innate structure of psychological type (MBTI). The workshop will include lectures, Q&A, and exercises.

Kesstan Blandin, PhD is Vice President, Research & Development, Myers & Briggs Foundation where she directs research and development for the Myers Briggs Type Indicator® (MBTI®), the Pearson-Marr Archetype Indicator® (PMAI®), and the Murphy-Meisgeier Type Indicator for Children® (MMTIC®). In addition, she is Editor of the annual *Journal of Psychological Type – Research Digest*, and a principal writer for all websites and material produced by the Foundation. For several years, Dr. Blandin taught dissertation research courses at Pacifica Graduate Institute, Santa Barbara, CA.

Jungian Wisdom School Seminars

Beginning in February of 2023, we are pleased to offer three monthly seminars on topics of great interest to Jungians: Alchemy, Gnosticism and Liminality. Each seminar will have four 90-minute sessions, beginning at 9amPT on Saturdays. There is a recommended text for each seminar. Our faculty for these Wisdom School Seminars includes Seattle Jung Society Co-President Bette Joram, Board Member Rev. Sam Osborne and Jungian Analyst Terrill Gibson. Come join us for a continuation of our Jungian Wisdom School of the Heart that we established in our fall series.

CEU's are available for all classes. All are welcome!

Members: \$50 per monthly seminar Non-Members: \$70 per monthly seminar; CEU's: \$20 per seminar
Student & Senior Discount code: STUDENT or SENIOR at checkout. (\$5.00 off)

Alchemy: The Art of Transformation with Bette Joram, Ph. D. LMHC (February 4, 11, 18, 25)

C. G. Jung first turned to Alchemy for personal illumination in coping with trauma brought on by his break with Freud. Alchemical symbolism eventually suggested to Jung that there was a process in the unconscious, one that had a goal beyond discharging tension and hiding pain. This seminar will explore alchemical symbols and transformative processes as they relate to dreams, personal growth, and transformation. We will learn Alchemy by doing Alchemy, guided by the text of the class, the wisdom of the instructor and the experience of the members of the seminar. Dr. Joram wrote her doctoral thesis on Jung's theory of alchemy and its value in the process of change, transformation, and individuation.

Recommended reading: *Alchemy: The Art of Transformation* by Jay Ramsay (1997/2017, Archive Publishing).

Gnosticism for Jungians with Rev. Sam Osborne (March 4, 11, 25, April 1)

When C. G. Jung sought historical precedent to help him understand and untangle his "confrontation with the unconscious," as recorded in *The Red Book: Liber Novus*, he landed in the richly complex territories of Gnosticism and alchemy, both of which he used to craft a hermeneutic of vision. In this seminar, Jung Society board member, Psy.D. candidate at Pacifica Graduate Institute, and Gnostic priest Rev. Sam Osborne will explore the archetypal dimensions of Gnostic cosmogony and myth, with particular attention given to their relevance in the individual psyche and how these ancient mythologems reappear in modern threads woven throughout Jung's analytical psychology.

Recommended reading: *The Search for Roots: C. G. Jung and the Tradition of Gnosis* by Alfred Ribi (2013, Gnosis Archive Books).

The Liminal and the Luminescent with Terrill Gibson, Ph.D., (April 8, 15, 22, 29)

The liminal is the rich vein of living image that Jung began to deep mine in 1913 when he began his *Black Book* journals and his *Red Book* calligraphy. It's from the same vein of liminal image that our Paleolithic ancestors discovered their sacred initiatory rituals in their Paleolithic cinema houses 32,000 years ago. It is the liminal realms that birth our destiny, both individual and collective. The Liminal world is where the Cosmos dreams us and the place where we dream the Cosmos in reply.

In this four-week seminar, we will discuss the first two chapters of my book in the first session and the remaining chapters, one each, in the following three sessions. I'll have a brief selection of introductory and concluding material during each gathering but most of our time will focus on stimulating, transforming, and deeply engaged conversation with each other about the liminal destiny process in each of our lives and in our chaotic current collective moment.

Recommended Reading: *The Liminal and the Luminescent: Jungian Reflections on Ensouled Living Amid a Troubled Era* (2021, Wipf and Stock).

The Library Corner by Tamara Walker

Librarian for the C.G. Jung Society of Seattle

"One of the penalties of an ecological education is that one lives in a world of wounds"

Aldo Leopold (1949), forward to *A Sand County Almanac*.

Perhaps the greatest gift of library volunteerism is to be literally surrounded by the writings of C.G. Jung and those moved by his thought and words. One such Jungian is James Hillman, a deeply honest, prolific, sometimes acerbic, and often controversial figure. Hillman seems topical today in response to our Society's recent three-part series: Imagining a Jungian Wisdom School for the 21st Century. I believe Hillman has much to offer our conversation. A large collection of his work rests on our shelves where he explores the imaginal, its relationship to soul, and the escape of Jung's ideas beyond the therapeutic dyad and into the world. Hillman demonstrates this most clearly in his short work: *The Thought of the Heart and the Soul of the World* (1982). However, not afraid to engage with challenging topics, Hillman also mines the depths of personal abyss in an earlier book: *Suicide and the Soul* (1965).

I was drawn to *Suicide and the Soul* through another exquisite but painful book, not by a Jungian but relevant to the idea of a wisdom school for our times. In *Earth Grief: The Journey into and Through Ecological Loss*, ecologist and author Stephen Buhner (2022) connects psychological dissociation, intimate feeling, and the written word. He identifies Hillman as a rare author who understands the power of words to evoke "the real and genuine brought naked and unconcealed into language" (p. 43). To demonstrate words' connection to feeling, Buhner, quoting George Carlin, tracks over decades society's description of war-weary soldiers. Named Shell Shock in WWI, Battle Fatigue in WWII, morphing into the Korean War's Operational Exhaustion, and finally resting as Vietnam's Post Traumatic Stress Disorder, today we simply name this state by its letters: PTSD. However, reaching back centuries to the Civil War, Buhner discovers what Carlin did not: a soldier's experience was once named for what it truly is: *Soldier's Heart*.

Today, we suffer a *Soldier's Heart* simply by walking through the world with feeling. Buhner connects feeling and meaning as Jungians would, writing "Meaning is found through our heart's response to what is presented to the senses. It's a feeling thing, not a thinking thing" (p. 39), adding later, "The first act of disobedience is to feel again in all its complexity—to let Earth touch the self and tell of its life through the feelings it engages in our hearts" (p. 42). Buhner specifically identifies three of Hillman's works as having been most helpful to him: *Re-Visioning Psychology* (1975), *Blue Fire* (with Thomas Moore, 1989), and *Suicide and the Soul* (1965). Hillman, and his work on the Anima Mundi, the soul of the world, first introduced me to Jung. Finding my own meandering way through the shadows of personal, political, and ecological grief, I bow in gratitude to the spines of Hillman books, soldiers standing at attention on our library shelves.

Updated library hours & operations can be found on our website: www.jungseattle.org For library volunteer inquiries please reach out to: officemanager.jungseattle@gmail.com

BOARD OF DIRECTORS

Bette Joram Ph.D. - Co President, Randy Morris Ph.D. - Co President, Sam Osborne - Treasurer,
Larry Cole - Recording Secretary, Jacob Cookston - Membership & Program Coordinator,
Cece Briggs Ph.D. - Outreach, Akesha Baron Ph.D. - Editor

OFFICE MANAGER - Hali A. Wilmmunson LIBRARIAN - Tamara Walker

VOLUNTEERS: Larry Cole - IT support, Library, Sea Gabriel Ph.D. - IT support,
Laura Rivendell - Accounting, Charles Morrison - Library, Linda and Michael Sheaffer - Library,
Quinn Quan - Library, Website, Megan Cassidy - Library

Community Page

Open call for artwork!

Ongoing call for art: we invite you to submit your own original art or poetry for potential use on our website or flyers. Please email submissions to: officemanager.jungseattle@gmail.com

The Seattle Jung Society is in need of volunteers! If you have tech, graphic design, or non-profit legal skills, or if you have a desire to help improve our Society and its operations, we would love to hear from you! Please email: officemanager.jungseattle@gmail.com

FOR SALE: LARGE SAND TRAY COLLECTION IN ITS ENTIRETY: Asking \$1,800 cash

Hundreds of high quality miniatures in excellent condition, most purchased individually. Carefully packed in 15 plastic boxes with contents labeled. Trays, bins, general supplies included.

Located in Langley (on Whidbey Island), WA.

For more information contact Christin Chaya: chaya@whidbey.net

TREASURER'S NOTE: By Sam Osborne

Many of us may find ourselves resistant to change. Whether it's as mundane as trying a new breakfast cereal or the tectonic shift into a new chapter in our lives, we humans – for the most part – would prefer things to stay the way they are, imperfect though things may be. If we are born under an earth sign, we may be even more resistant to change than our brothers and sisters of water, fire, or air. Sometimes collective transitions can be painful as we are dragged against our wills into a new way of seeing, a new way of being, or a new way of relating. Fallout from the still-ongoing COVID-19 pandemic – and the changes we have all been forced to make – has been brutal for many of us, and the C. G. Jung Society, Seattle is no exception. I get it. I miss going to meetings at the Good Shepherd Center, seeing familiar and new faces in person, and the pleasure of interacting in real time with actual physical other people, as we explore the heights and plumb the depths of the human psyche through the lens of Jung's psychology together. On top of that, we must learn and utilize new technologies and platforms in order to maintain our mission. On the other hand, virtual events have opened new possibilities for previously unreachable audiences to join us and world-class speakers like Bill Plotkin and Chris Bache who shared their wisdom and profound insights with us this year without the expense and hassle of travel.

While we hope to return to some semblance of normalcy in this regard in the future, for now, things are different, mostly virtual, and new systems are in place to help make all of this easier, at least theoretically. Thank you for sticking with us through these challenging times of change and the inevitable snafus that accompany it! Change is never easy, but when we are all in it together, the pain seems to lessen just a little. **As you consider your year-end giving, please keep the C. G. Jung Society, Seattle in mind to support our efforts to surf the waves of change as gracefully and inclusively as possible.** As ever, our entire raison d'être remains you – our community of individual members and the perpetuation of Carl Jung's legacy to the world. Your gift keeps the library going for future generations and underwrites all the excellent programming you already expect and cherish. We have many fantastic and enriching programs in store for the coming year, and your support makes that possible.





C. G. Jung Society, Seattle

4649 Sunnyside Avenue North, Room 222
Seattle, WA 98103

NONPROFIT ORG.
U.S. POSTAGE
PAID
SEATTLE, WA
PERMIT NO. 1820

C.G. Jung Society, Seattle Mission Statement:

As a thoughtful learning community, we are on a mission to raise consciousness through fostering deep psychological and spiritual understanding of ourselves and the increasingly complex and challenging world around us. We strive to make Jungian and depth psychological thought accessible to the general public with contemporary lectures, workshops, archives and other resources that help liberate the soul and transform culture.

Registration fees for the Society's regular lectures are as follows:

Members - \$20; Non-members - \$25

To view all of our upcoming events and to get tickets, as well as information on becoming a member or to make a donation, please visit www.jungseattle.net

Contact the office: officemanager.jungseattle@gmail.com